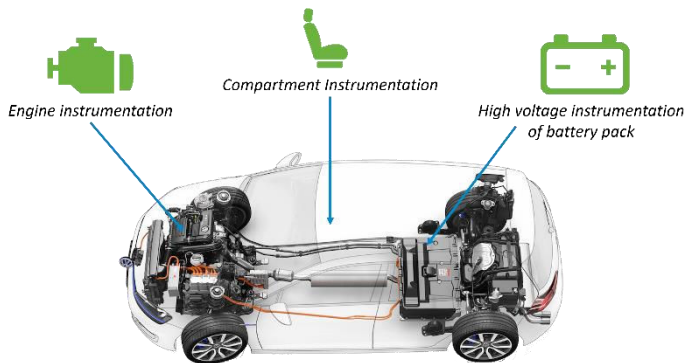


VEHICLE INSTRUMENTATION

➔ Internal Combustion Engine ➔ Gaz ➔ Electric Vehicle ➔ Plug-in Hybrid Electric Vehicle

- ❑ **Multiphysics** instrumentation : Expertise on all sensor technologies
- ❑ Various applications, **up to specific request and very intrusive instrumentation**
- ❑ Global physical instrumentation acquiring data **in one single test environment**

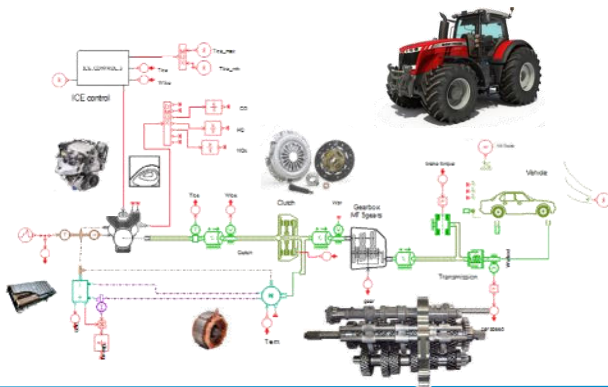
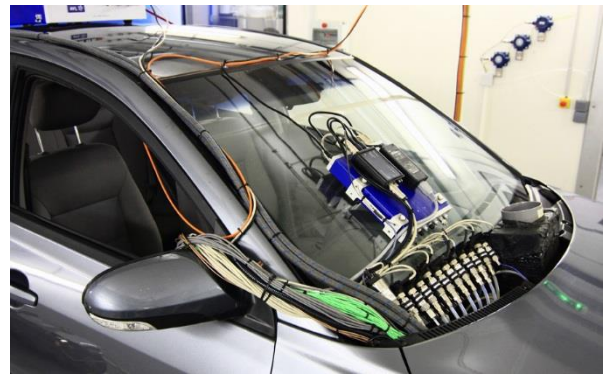


KNOW-HOW

- ✓ **Any vehicle technology** (ICE, Gaz, EV, PHEV)
- ✓ **Mechanical** instrumentation (efficiency)
- ✓ **Fluids** instrumentation (oil, coolant, air)
- ✓ **Electrical** instrumentation (low and high voltage)
- ✓ **Thermal** comfort (passenger and driver feeling)

APPLICATIONS

- ✓ Vehicle **Benchmark** (physical measurements)
- ✓ Vehicle **energy** management **analysis**
- ✓ System **development** / **calibration**
- ✓ Tests from **road** to test **bench** (RDE)



ANALYSIS SUPPORT

- ✓ Global data **assistance** with **specialized team**
- ✓ **Dedicated** post treatment routines
- ✓ **Model** and **simulation** capabilities

Feel free to visit our website www.greenmot.com and [contact us](#) for further information.